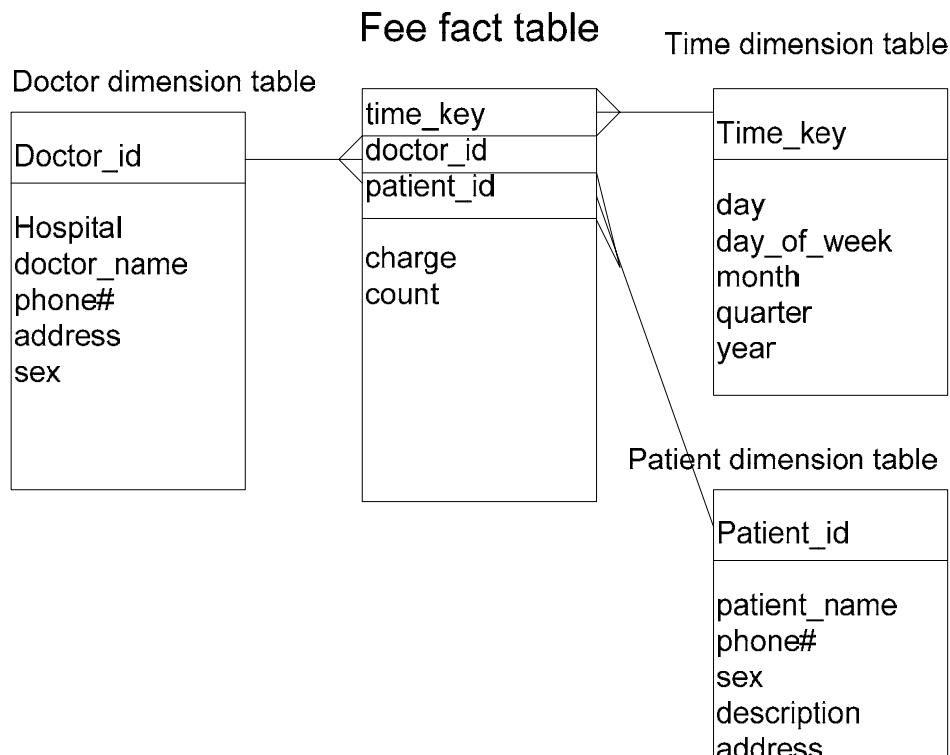


Student Number:
CS5483 Tutorial Review Question 5

Student Name:

Date:

Suppose that a data warehouse consists of the three dimensions *time*, *doctor*, and *patient*, and the two measures *count* and *charge*, where charge is the fee that a doctor charges a patient for a visit.



- (a) Starting with the base *cuboid* [*day*, *doctor*, *patient*], provide a MDX (Multidimensional Expression) query to list the total fee collected by each doctor in 2000?
- (b) To obtain the same list, write an SQL query assuming the data is stored in a relational database with the table *fee* (*day*, *month*, *year*, *doctor*, *hospital*, *patient*, *count*, *charge*).

Model answer:

- (a) **Select** {[Fee].Charge} on Columns
({[Doctor].doctor_name}, {[Time].Year}) on Rows
from Cuboid
Where ([Time].[Year].[2000])
- (b) **Select** doctor, sum(charge)
from Fee
where year = '2000'
Group by doctor